

*Another*

# GIGANTIC LAND AUCTION

SATURDAY JUNE 9  
12 NOON

Raise your hand for Alberta ...





# WHISPERING HILLS ESTATES

38 Lots from 3 - 9 acres

All acreages sell

On Saturday



**Location from Edmonton:** Only 30 miles East on Highway #14 to Lindbrook store; then 2 miles North and ½ mile East. Watch for signs.

**Access:** Paved roads to within ½ mile of subdivision. Roads in subdivision built to County All Weather Standard.

**Lot Description:** All lots are approximate sizes and they vary from 3 to 9 acres in size. Most are heavily treed and rolling. Some have clearing. Ideal for horses.

**Shopping and Conveniences:** (1) Store and gas pumps at Lindbrook on Highway #14 - 2½ miles. (2) Tofield with a population of 1200 is 9 miles East. (3) Sherwood Park; population of 40,000 is 20 miles West (4) Edmonton - 30 miles to the West.

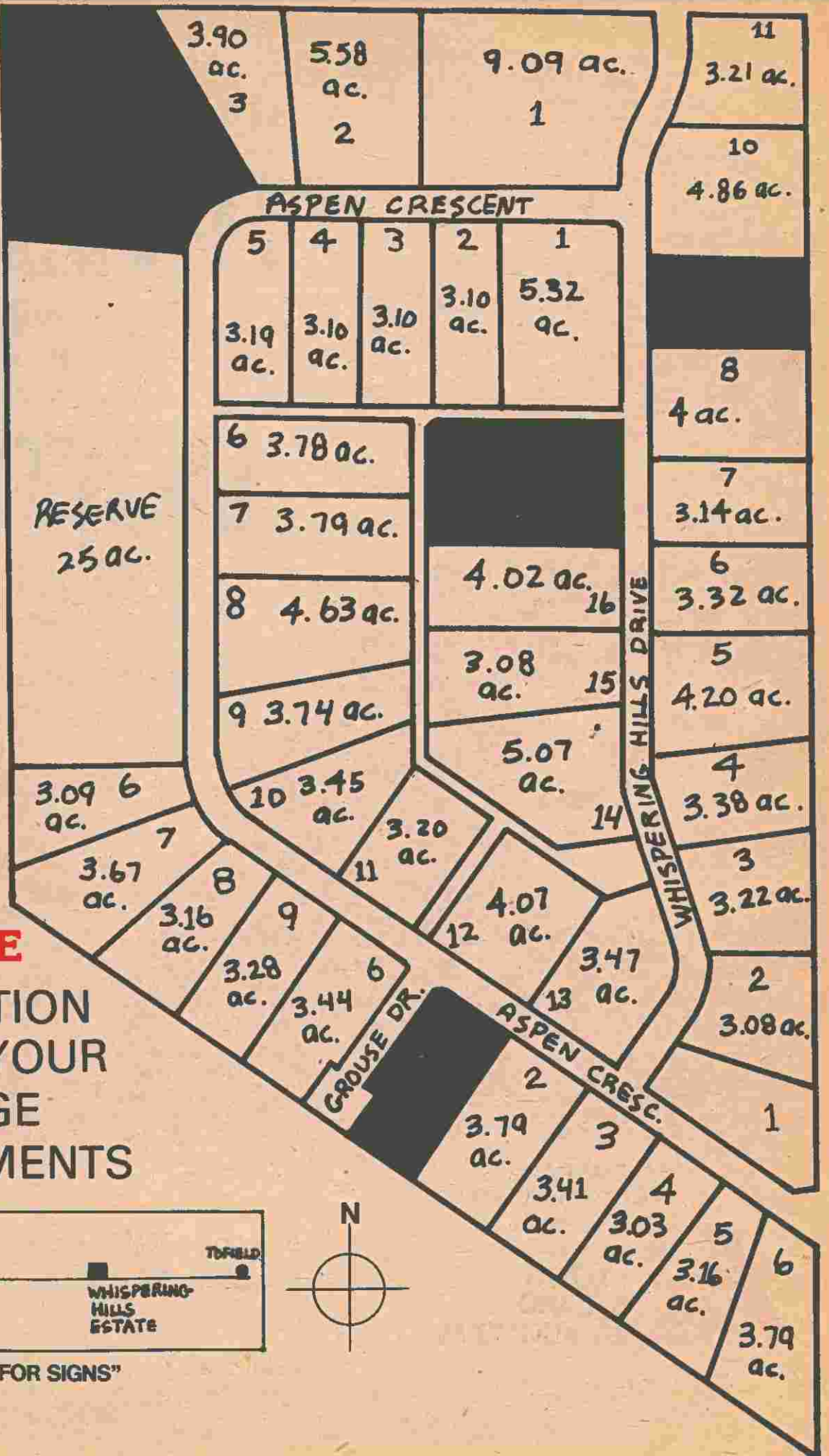
**Community Facilities:** (1) Complete schooling in Tofield. Bused from gate. (2) Modern hospital in Tofield. (3) Organized hockey and curling in Tofield, Fultonvale, and Sherwood Park; all within 20 minutes driving. (4) Tofield has a modern hotel, motel, shopping centre, and a proposed new industrial area expansion.

**Residential Facilities:** (1) Go hiking and skidoing in the 23,000 acres of virgin land in the Cooking Lake Forest Reserve only 2 miles to the North. (Follow the Waskahegan Trail). (2) Go goose hunting at Beaver Hills Lake, only 6 miles to the East. (3) Elk, deer and moose roam the area. (4) A riding stable is located within a ¼ mile of the subdivision. (5) Go water skiing on Hasting, Cooking, or Miquelon Lakes - all within 15 minutes. (6) All lots have a reserved dedication on back boundaries for purpose of horseback riding, hiking, walking, skiing, skidoing, etc. (7) Reserve lot contains 25 acres for the enjoyment of the people in the area.



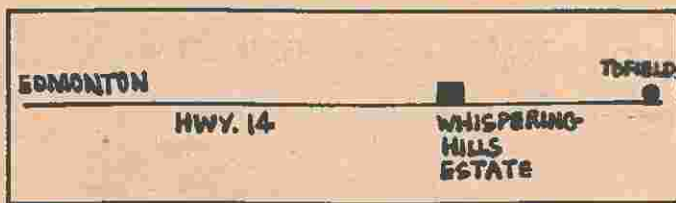
to the highest bidder.

June 9/79



**RAM MORTGAGE**

ON LOCATION  
FOR ALL YOUR  
MORTGAGE  
REQUIREMENTS



"WATCH FOR SIGNS"



SALE ARRANGED  
AND CONDUCTED BY:



Auctioneer BRIAN LOVIG & GAIL LOVIG

Phone: 425-8253

Real Estate Co-ordinator  
DAVE HUTTON

LICENSE #54968