

**Unreserved • No Minimum • Real Estate**

# AUCTION

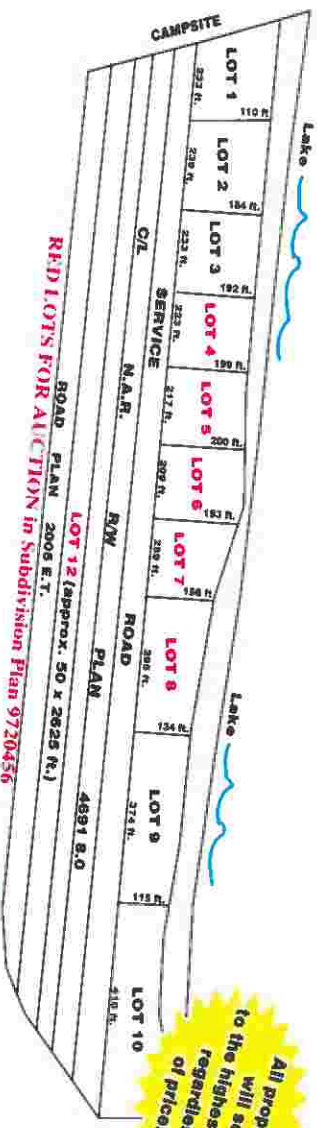
**Monday, June 9, 1997, 7:00 pm at the Sawridge Hotel, Slave Lake, Alberta**

- 5 waterfront lots, 1 back lot.
- large lots (more than 1 acre).
- The waterfront sites are prime properties on the top of the bank of Lesser Slave Lake sloping gradually toward the lakeshore in the town of Canyon Creek.



Lake Front Lots at Canyon Creek on Lesser Slave Lake

- Services include town water, gas, phone and power.
- Property taxes average \$25.00 per year.
- Hotel, marina and campsites are close to the properties.
- Lesser Slave Lake is less than 2.5 hours north of Edmonton and is the largest lake in Alberta. It also has the best pickerel fishing anywhere!



All properties to the highest bidder regardless of price!

RED LOTS FOR AUCTION in Subdivision Plan 9720456



**Apple Auction Corporation**  
REAL ESTATE AUCTIONS